

The background of the slide is a photograph of a server room. The room is filled with rows of server racks on both sides, illuminated with a cool blue light. The floor is highly reflective, mirroring the lights and the racks. The perspective is from the end of a long aisle, looking down the center. The ceiling has a grid pattern with recessed lighting.

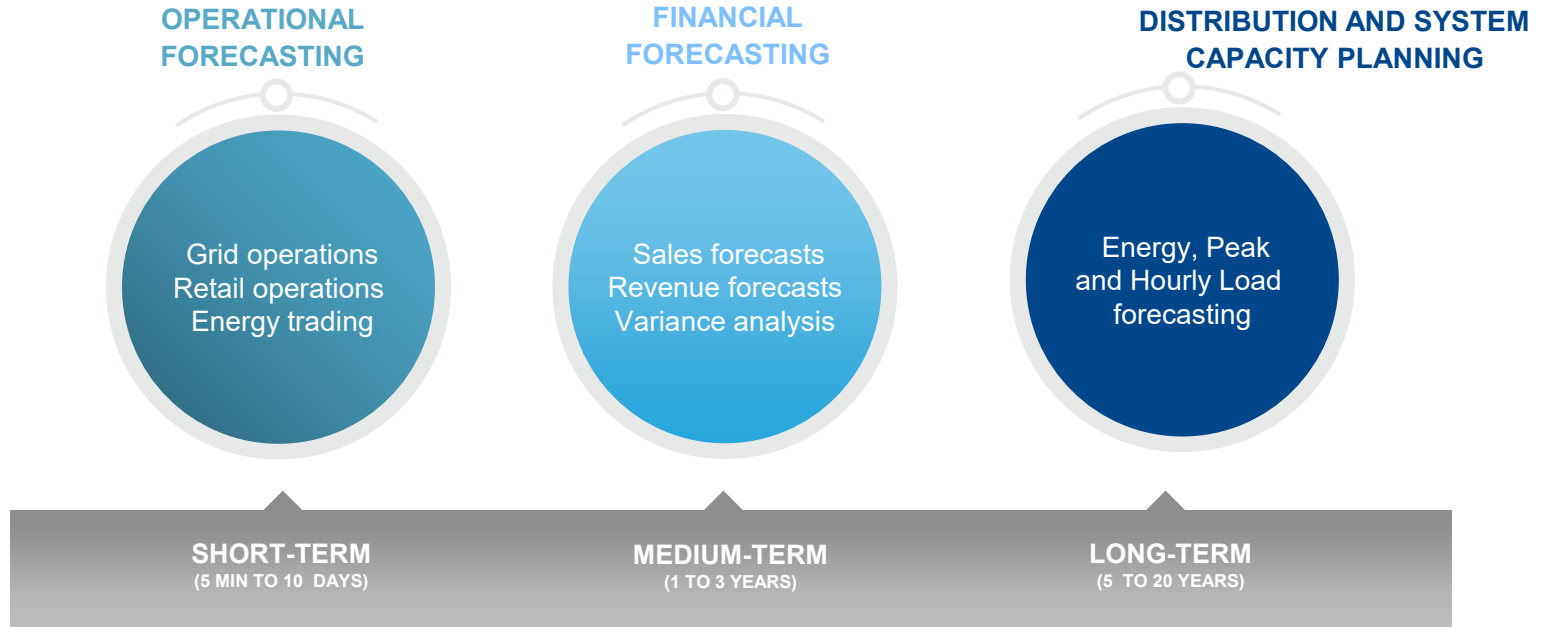
# MACRUC 31<sup>st</sup> Annual Education Conference Panel: Powering the Mid-Atlantic

June 16<sup>th</sup>, 2026  
Eric Fox

# Itron Forecasting Team



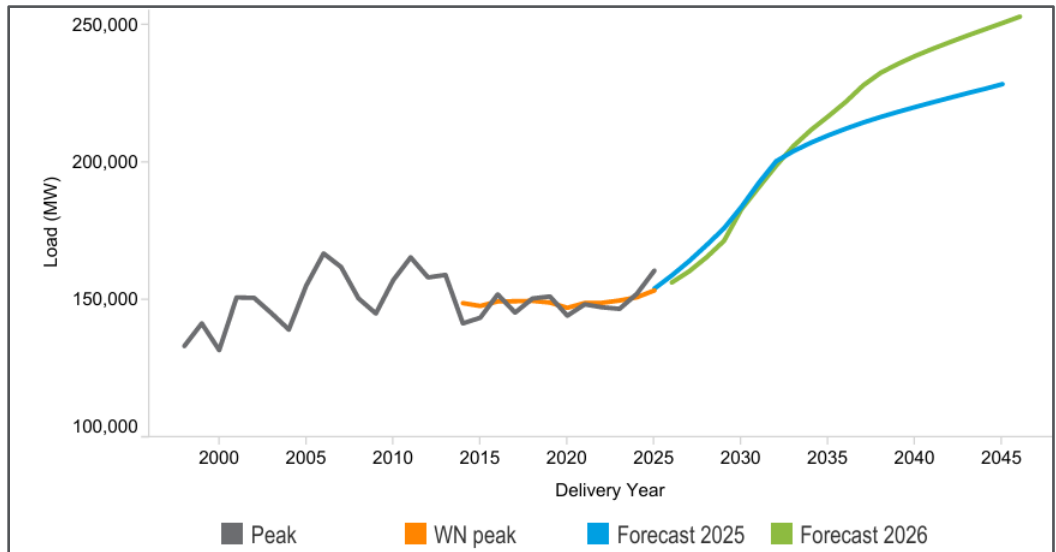
# WHAT WE DO



# PJM Load Forecast, Increasing Every Year

PJM Summer Peak Average Annual Growth Rate				
Forecast Yr	10-Yr	15-Yr /20-Yr	Range	Median
2022	0.4%	0.4%	-0.3% to 2.2%	
2023	0.8%	0.8%	-0.7% to 5.0%	-0.1%
2024	1.6%	1.6%	0% to 5.5%	0.5%
2025	3.1%	2.0%	0.1% to 6.3%	0.7%
2026	3.6%	2.4%	-0.2% to 6.4%	1.6%

While economic growth, electric vehicles, and building electrification are contributing factors, data centers are by far the largest contributor to system growth.



# U.S. Data Center Demand is Expected to Skyrocket

53,000 MW in Data Center Loads Currently in Place, Doubles in 10 Years

**Bloomberg NEF:**

- Data center capacity will increase to 106,000 MW in 2035 (New data center load 66,000 MW)

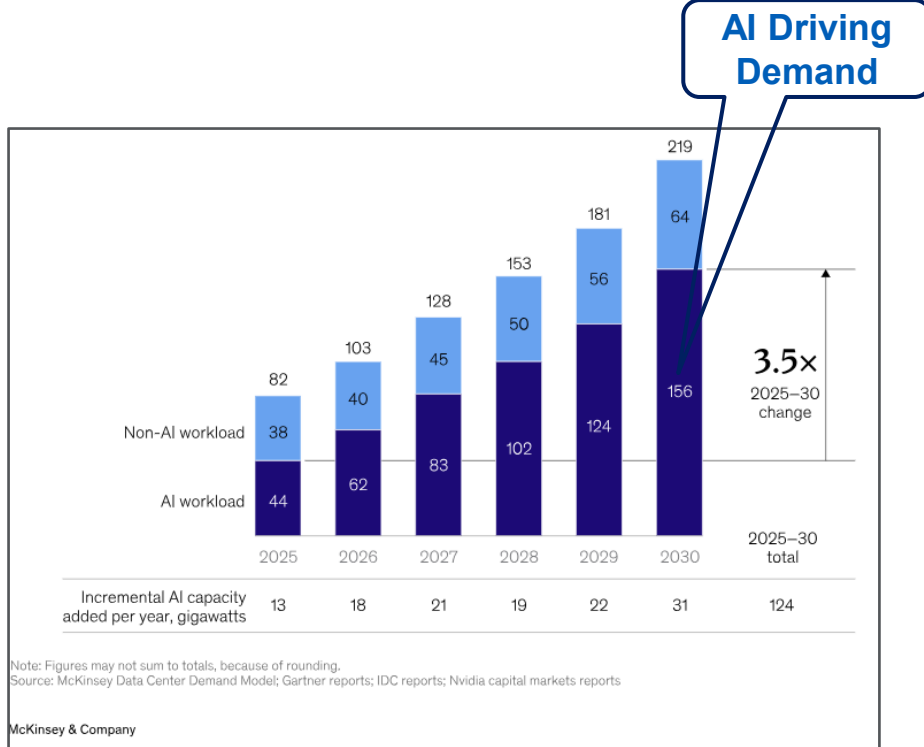
**Datacenter Hawk:**

- North America Absorbed 15,600 MW in 2025 and expect even higher absorption in 2026
- 5,000 MW added in 2024

**McKinsey by 2030:**

- World data center capacity reaches 219,000 MW
- Data center investments \$7 trillion.
- Utility infrastructure cost \$1.4 trillion

**Data center share of U.S. energy demand increases from 5% in 2025 to 12% in 2030**



# But there are a few bumps in the road...

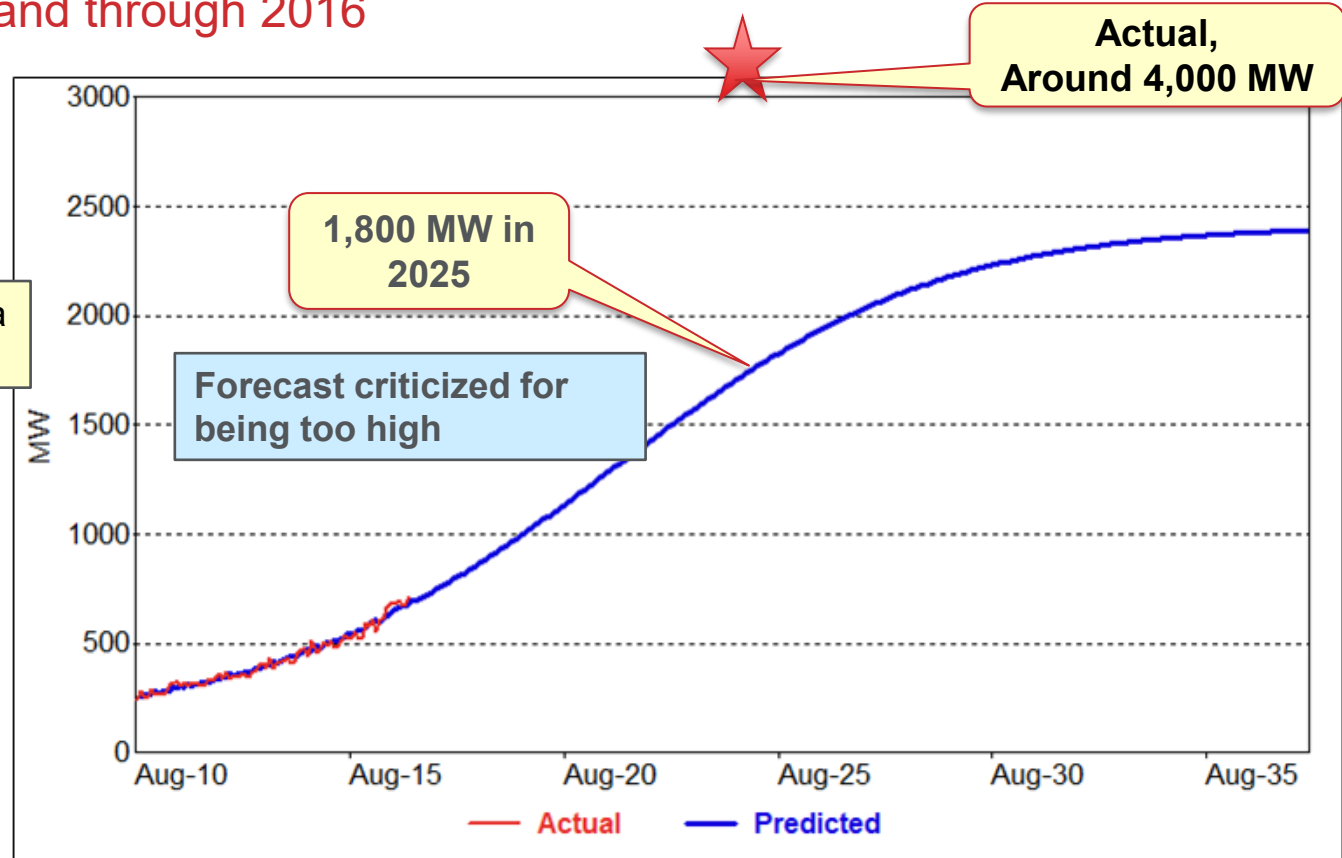
- » Power infrastructure constraints will likely slow capacity growth
  - Significant backup in interconnection queues
  - High voltage equipment and transformer constraints
  - Significant time requirements and cost to build out needed generation
- » Increasing community and rate payer opposition
- » And not all the data center proposals will likely get built out

**Astrid Atkinson, former Google Senior Director of Software Engineering (now CEO of Camus Energy):**  
“Conservatively, you’re seeing 5-10 times more interconnection requests than data centers actually being built”.

Getting the forecast (and timing) right is not easy

# Itron 2017 Dominion Data Center Capacity Forecast

Based on actual demand through 2016



Forecasted 2.5 times 2016 data center capacity by 2025.

# How Utilities Forecast Data Center Loads:

## Southern Companies:

Probabilistic model assigns expected value based on past patterns of load request

Pipeline Stages	Definition
Prospective Pipeline	Potential large load customers in early to mid-stages that have requested service in one of our electric service territories
Late Stage	Project is progressing through the review process and likely to execute contract within 12 months
Finalizing	Project is highly likely to execute contract in the near term
Fully Contracted	Fully executed agreement to take electric service submitted to, or reviewed by, state regulator

## NV Energy:

Starting in 2025, requires power service agreement before including in the forecast

Load ramps **adjusted** using NV Energy historical experience for factors such as delays, reductions, schedule changes, and project risk.

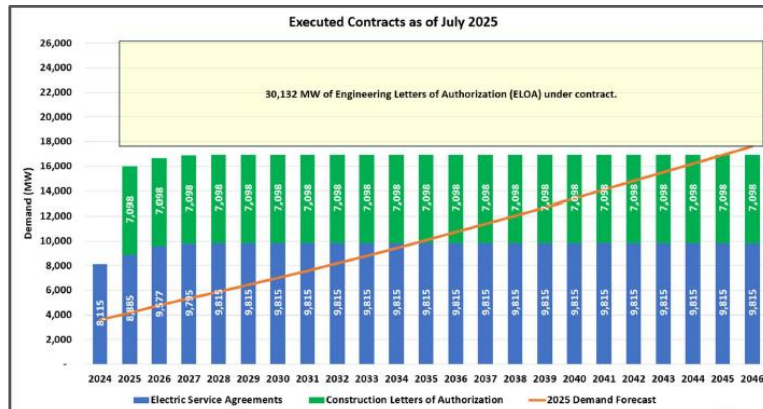
## ERCOT:

Starts with RFI from Distribution Utilities  
Load Connection Requests: 250,000 MW by 2032

Adjust requests based on historical realization rates  
Adjusted Loads: 145,000 MW

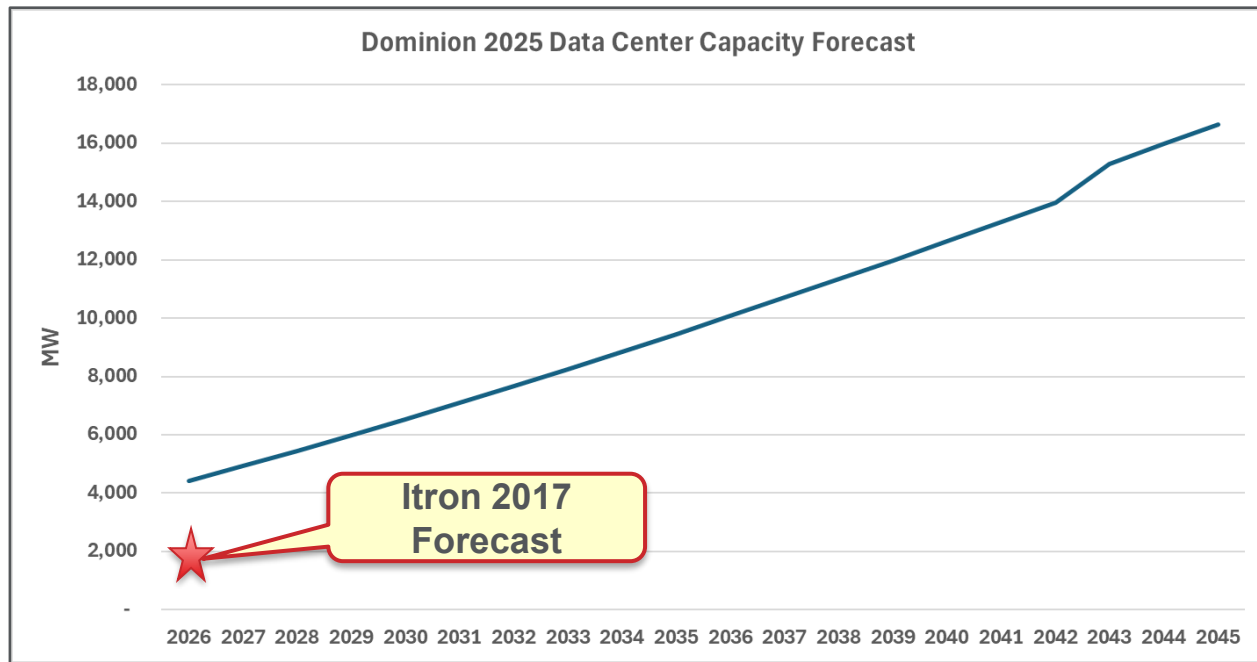
## Dominion:

Not included in forecast until Engineering Letter of Authorization (ELOA) is signed along with \$250,000 study payment. Project 10,000 MW of data center load by 2036



# Dominion Energy Current Data Center Forecast

- » Current system peak 24,000 MW.
- » 2,700 MW new capacity over the next five years.
- » 5,600 MW new capacity over the next 10 years.
- » Nearly 17,000 MW of *Electric Service Agreements* plus *Construction Letters of Authorization* in place



**A strong foundation supporting the forecast**