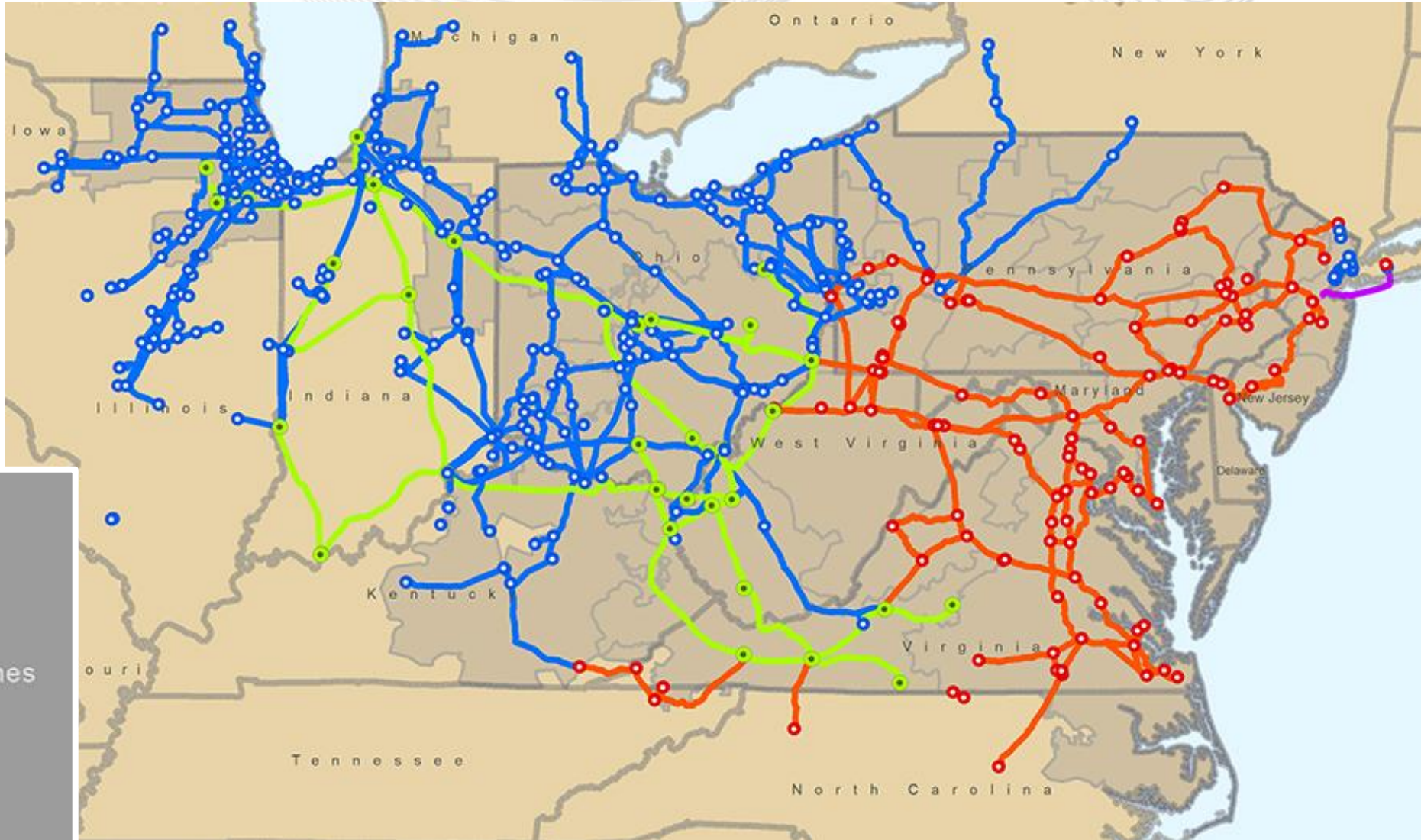




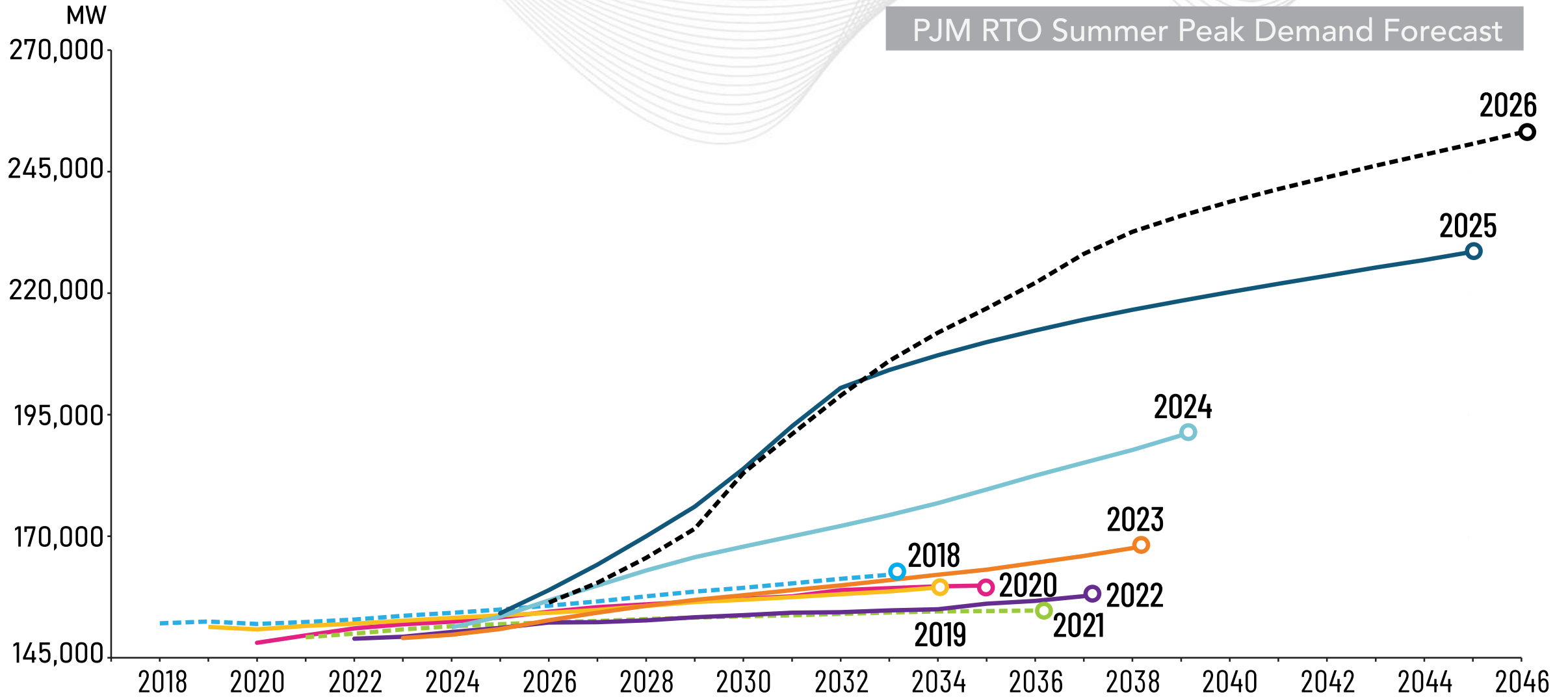
# Transmission & Generation in the Mid-Atlantic

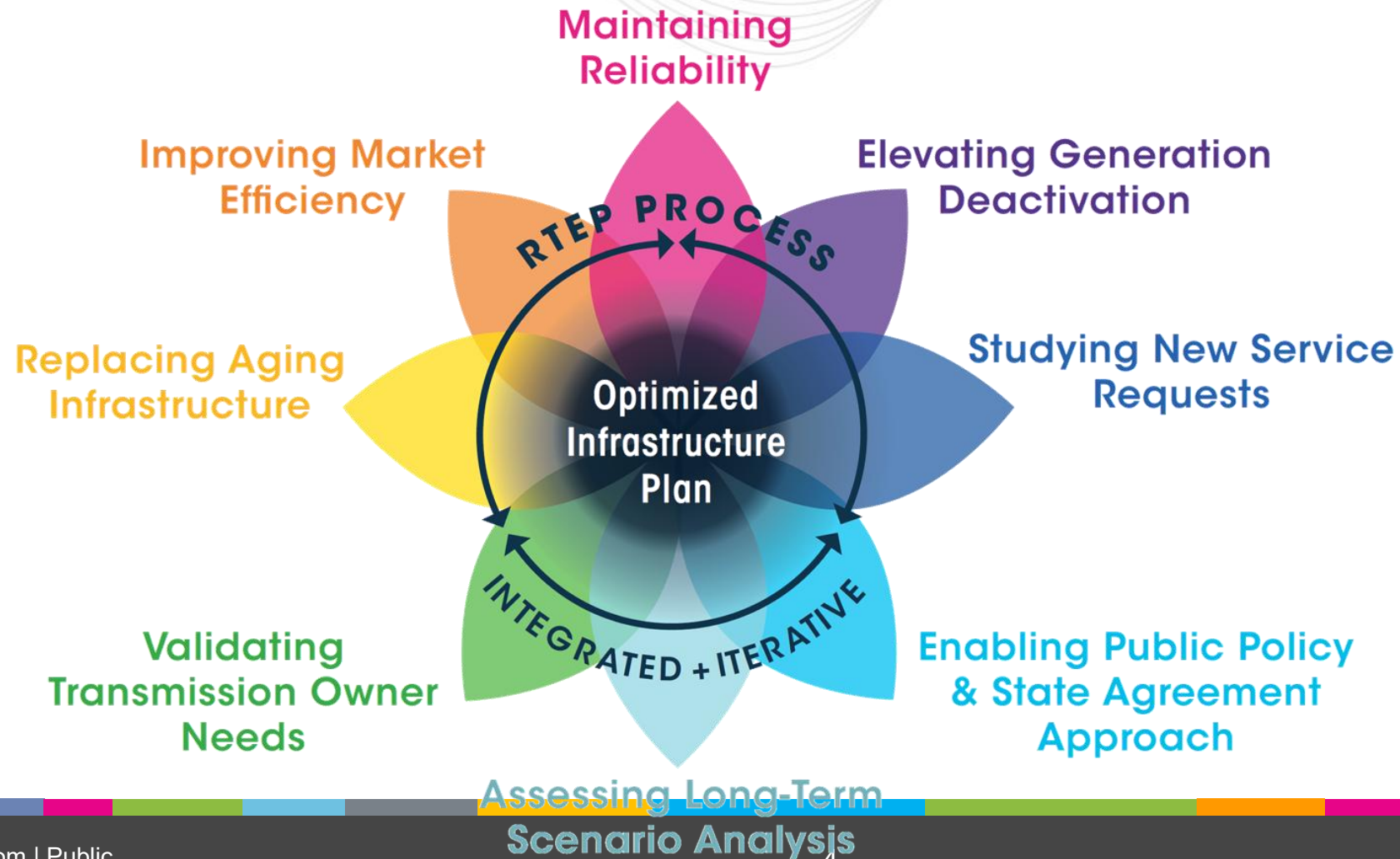




# Electricity Demand Growth

PJM RTO Summer Peak Demand Forecast



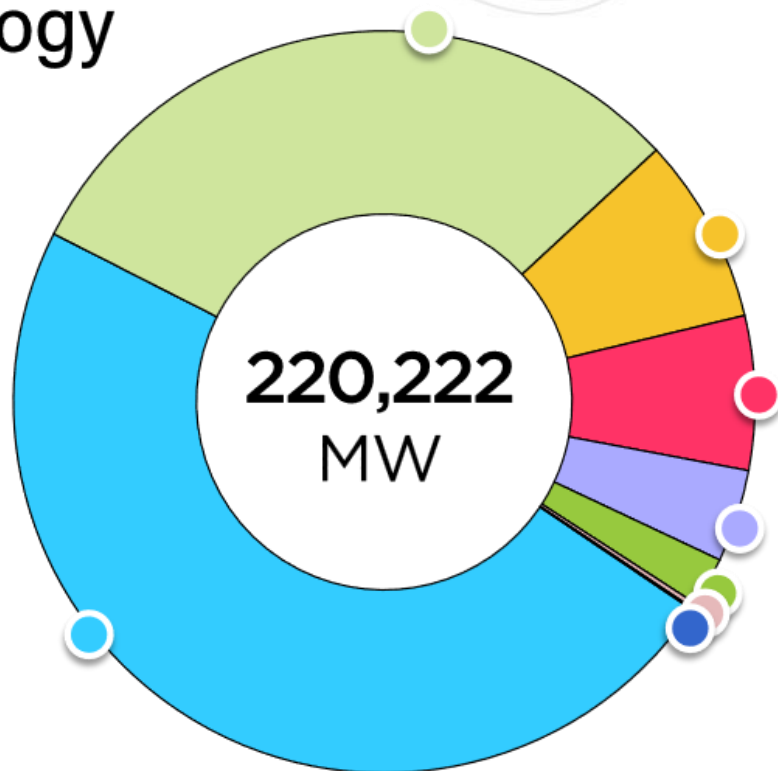


## Cycle 1 Submissions by Fuel/Technology Type (MWE)

**No. of Units:**

**811**  
Generation Interconnection Submissions

As of April 28, 2026



	<b>Natural Gas</b> , 105,797 MW <i>Includes single and dual fuel</i>	<b>157</b>
	<b>Storage</b> , 67,465 MW	<b>349</b>
	<b>Nuclear</b> , 17,906 MW	<b>27</b>
	<b>Solar</b> , 14,781 MW	<b>142</b>
	<b>Solar/Storage</b> , 8,890 MW	<b>45</b>
	<b>Wind</b> , 4,726 MW	<b>65</b>
	<b>Hydro</b> , 151 MW	<b>11</b>
	<b>Other</b> , 506 MW <i>Biomass, Coal, Methane, Fusion</i>	<b>15</b>



# Transmission & Generation in the Mid-Atlantic